



MNxx20 175 Lb-In. And MNxx34 300 Lb-In. Non-Spring Return Direct Coupled Actuators

MNxx20/34 non-spring return damper actuators with 175 or 300 lb-in of torque provide modulating or floating control for rotary valves, linear valves with appropriate linkage, and air damper applications.

Overview



MNxx20 175 lb-in. and MNxx34 300 lb-in. Series Non-Spring Return Direct Coupled Actuators (DCA) are used within heating, ventilating, and air-conditioning (HVAC) systems. They can drive a variety of quarter-turn, final control elements.

Applications include: Volume control dampers, mounted directly to the drive shaft or remotely (with the use of accessory hardware). Quarter-turn rotary valves, such as ball or butterfly valves mounted directly to the drive shaft. Linear stroke globe or cage valves mounted with linkages to provide linear actuation.

Features & Benefits:

- Self-centering shaft adapter
- Access cover to simplify wiring
- Declutch for manual adjustment
- Mechanical stroke limits (MN6120/MN7220 only)
- Internal auxiliary switches (MN6120/MN7220 only)
- Rotation direction selectable by switch
- Mountable in any orientation (no IP54 if upside down)
- Mechanical position indicator

Certifications:

- UL/cUL
- UL873, File No. E4436; Guide No. XAPX
- CE
- C-TICK
- UL94 Plenum Rating








 Please [sign in](#) to purchase.

[Sign In](#) 

6 Skus

Search by Part Number or Description

Clear

Compare Part Number		Description	
<input type="checkbox"/>	MN7220A2205	Direct Coupled Actuator, Non-Spring Return, 175 lb-in, 20 Nm,24 Vac, Modu...	
<input type="checkbox"/>	MN7220A2007	Direct Coupled Actuator, Non-Spring Return, 175 lb-in, 20 Nm,24 Vac, Modu...	
<input type="checkbox"/>	MN6134A1003	 Discontinued Direct Coupled Actuator, Non-Spring Return, 300 lb-in, 34 Nm, 24 Vac, Floati...	
<input type="checkbox"/>	MN7234A2008	Direct Coupled Actuator, Non-Spring Return, 300 lb-in, 34 Nm, 24 Vac, Mod...	
<input type="checkbox"/>	MN6120A1002	Direct Coupled Actuator, Non-Spring Return, 175 lb-in, 20 Nm,24 Vac, Floati...	
<input type="checkbox"/>	MN6120A1200	Direct Coupled Actuator, Non-Spring Return, 175 lb-in, 20 Nm,24 Vac, Floati...	

Related Products



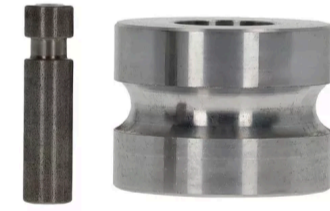
SW2 Auxiliary Switch Kit for HVAC Damper...

Auxiliary Switch Package - High
Torque Spring Return (MSxx10
[LEARN MORE](#)



Q7002 Interface Modules

The Q7002 Interface Modules
allow controllers with an otherwise
[LEARN MORE](#)



Q5024 Globe Valve Linkage and Bonnet...

Q5024 Globe Valve Linkages
connect a Honeywell direct
[LEARN MORE](#)