



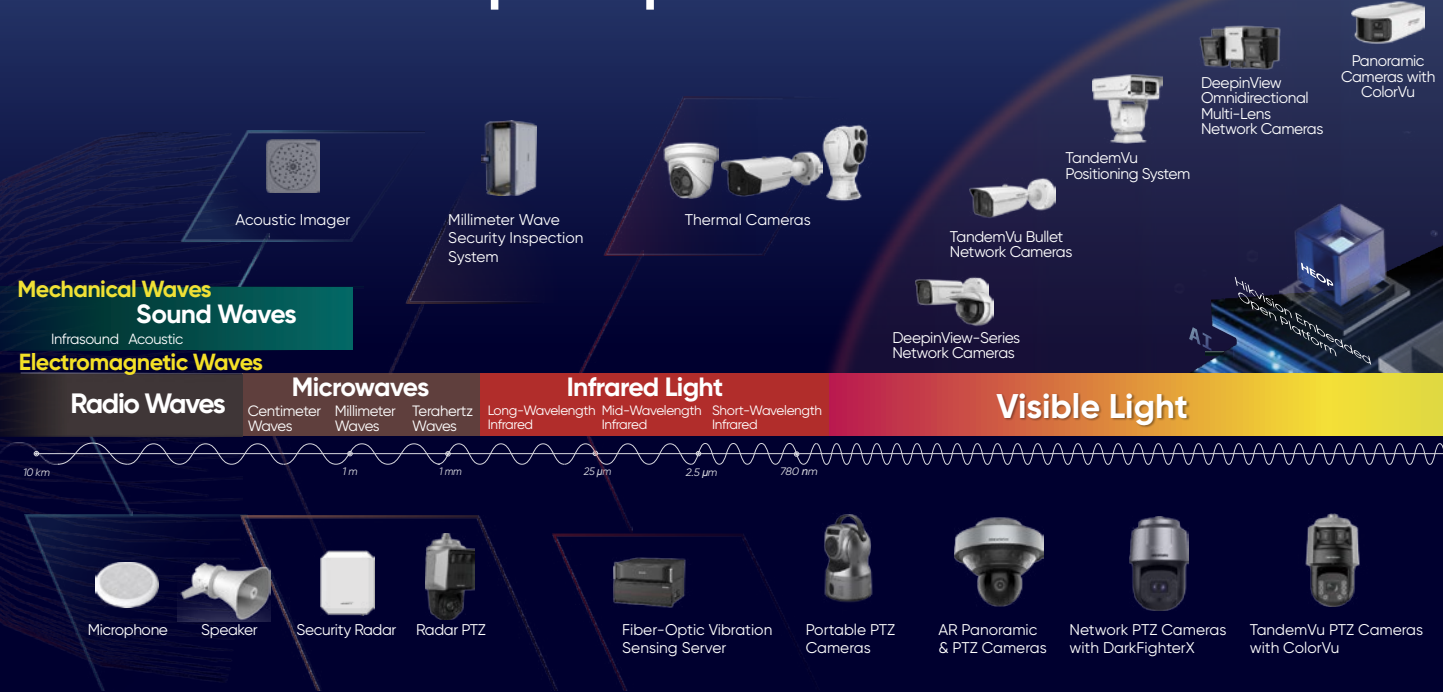
# **Shield** Every Edge

Intelligent Perimeter Protection Solution

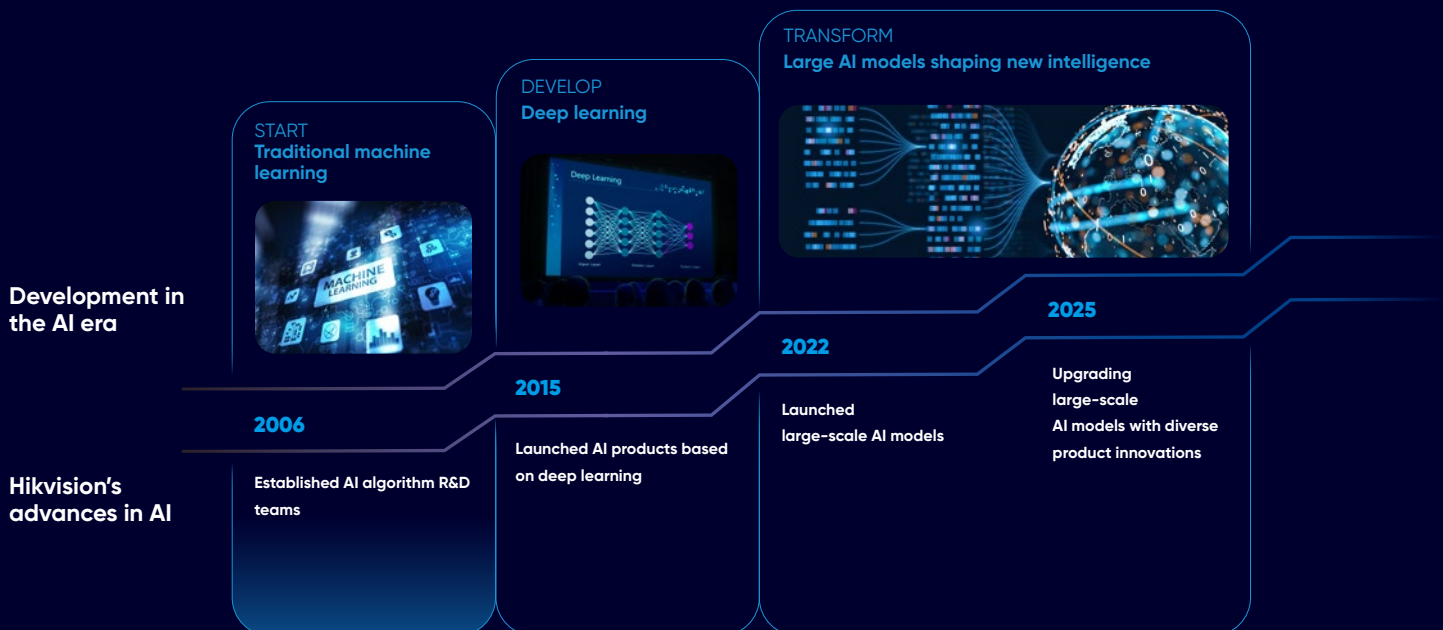
# Why Hikvision

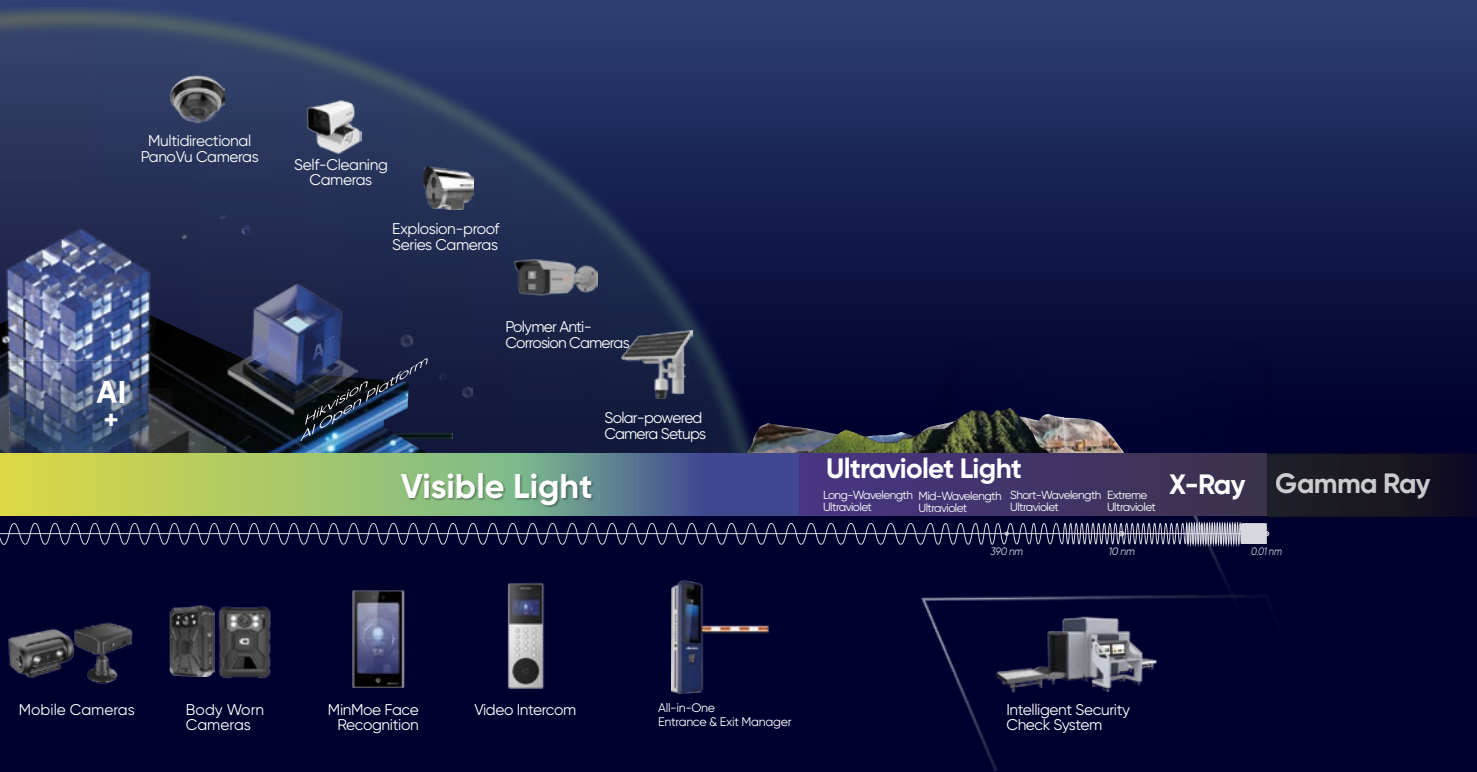
We are always committed to driving breakthroughs in core technologies to redefine the future of intelligent innovation.

## Multidimensional perception



## AI technologies keep innovating



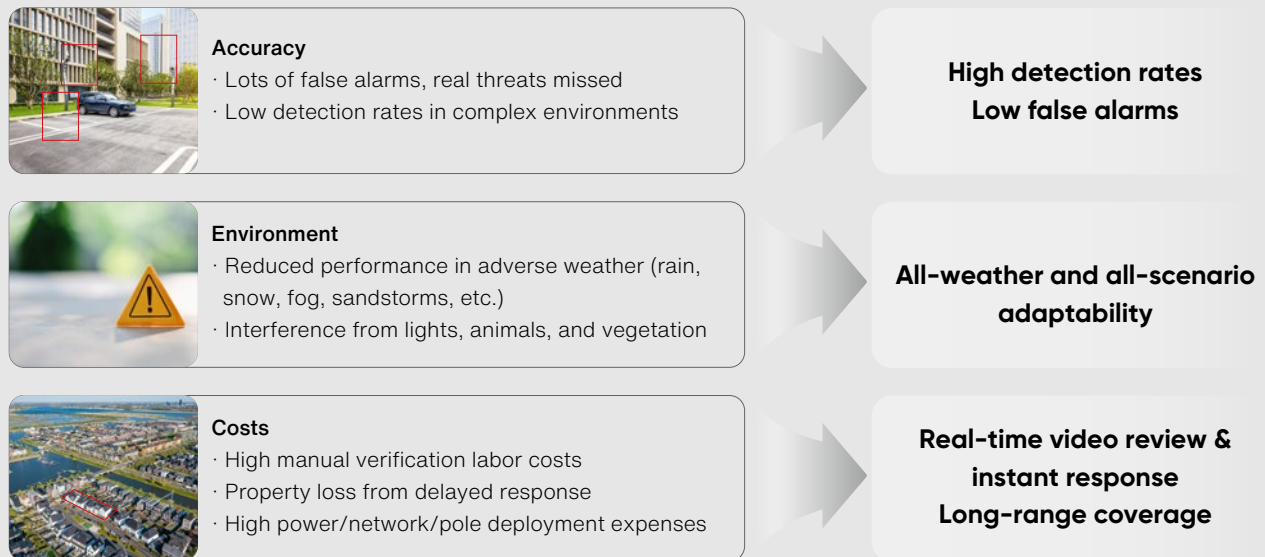


# Guanlan large-scale AI models architecture

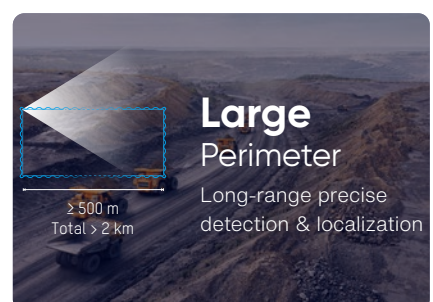
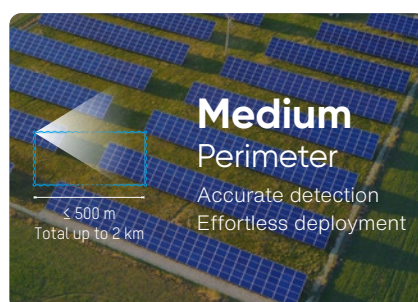
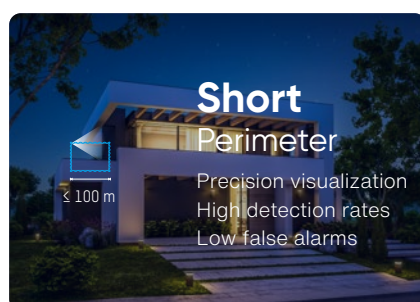
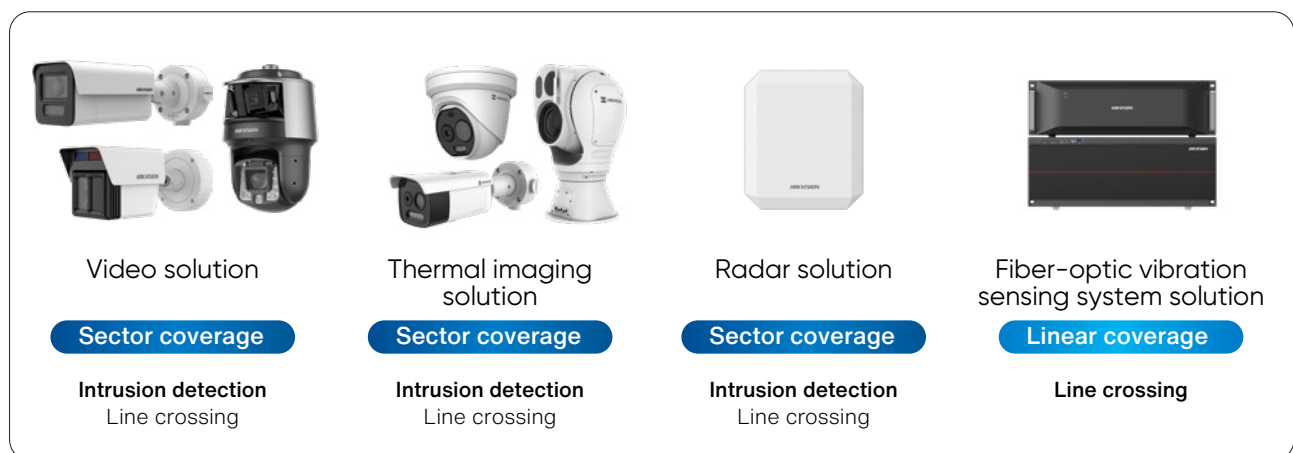


# Intelligent Perimeter Protection Solution Overview

## Challenges in perimeter protection



Hikvision's **Intelligent Perimeter Protection Solutions** adapt to various scenarios, allowing users to select the ideal match for their unique perimeter protection needs.



# Short Perimeter Solution

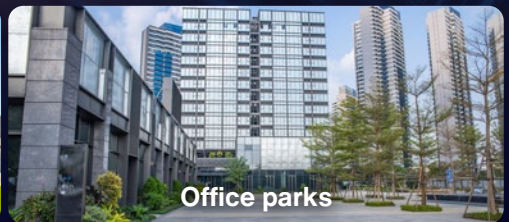
## What is short perimeter?



≤100 m  
per side



Villas/residential areas



Office parks



Parking lots



Construction sites

## Common challenges



### Missed detections

- Small targets at long distances
- Unusual poses
- Partial occlusion by vegetation
- Harsh environments (e.g., darkness, rain, snow, fog).



### High false alarms

- Environmental interference (e.g., animals, vehicle lights, swaying leaves)
- Algorithm limitations: Rule-setting errors, misjudged perspectives, etc.



### Hard alarm verification

- Traditional methods lack video verification, resulting in higher time and cost

# What we offer

For short-range perimeter scenarios, Hikvision offers **video** and **thermal imaging** solutions with high detection rates and low false alarms. When paired with AcuSeek NVR, the solution enables rapid video retrieval, significantly improving efficiency.

## Video solution

Video solution offers wide, long-range coverage, superior night-time color imaging with DarkFighter 2.0, and precise alarm functions, enhanced by Guanlan large-scale AI models to minimize false and repeated alarms.

DeepinViewX Cameras  
with Guanlan



- **Longer detection range**  
**2x** conventional camera detection range\*
- **90% fewer false alarms\***



DeepinMind NVRs  
with Guanlan

- **50% fewer repeated alarms\***

\*Compared with conventional AI cameras, based on project testing data and is for reference only.

## Thermal imaging solution

Thermal imaging solution addresses bad weather, dark areas, hidden targets, or high-security needs. It supports dual-light VCA and is equipped with Guanlan large-scale AI models to achieve high detection rates in all weather conditions and scenarios.

HeatPro Cameras  
with Guanlan



- **Longer detection range**  
**50%** improved person detection range\*
- **90% fewer false alarms\***
- **Clear target classification**  
Person & vehicle classification with confidence coefficient\*

\*Compared with traditional thermal imaging cameras, based on project testing data and is for reference only.

# Key products

## Video products

**New projects:** Directly deploy cameras (IP cameras, PTZs) with large-scale AI models

### DeepinViewX Cameras with Guanlan



iDS-2CD7T46G2/VX3-I(H)S(Y)  
Maximum VCA Range (Night)

**120 m**

- Triple fixed lenses (4 mm + 12 mm + 25 mm), supports Picture-in-Picture
- 4 MP@30 fps (CH1) + 2 MP@30 fps × 2, SharpMotion
- 90%\* reduction in false alarms
- 60 m, 60 dB speaker, red and blue lights Live Guard
- TPM 2.0, IP67/IK10, PVC FREE, -Y: NEMA 4X



iDS-2CD5Ax6G2/V-XZ(H)S(Y)  
Maximum VCA Range (Night)

**80 m**

- 2.8-12/8-32 mm motor lens, P-Iris
- 4/8 MP@30 fps, SharpMotion
- 90%\* reduction in false alarms
- IP67/IK10, -Y: NEMA 4X



iDS-2CD5Tx7G2/V-X(H)S(Y)  
Maximum VCA Range (Night)

**60 m**

- 2.8/4 mm, F1.0 lens
- 4/8 MP@30 fps, SharpMotion
- 90%\* reduction in false alarms
- Two-way audio
- IP67/IK10, -Y: NEMA 4X



iDS-2CD53x7G2/V-X(H)S(Y)  
iDS-2CD5Dx7G2/V-X(H)S(Y)  
Maximum VCA Range (Night)

**40 m**

- 2.8/4 mm, F1.0 lens
- 4/8 MP@30 fps, SharpMotion
- 90%\* reduction in false alarms
- Two-way audio
- IP67, IK10 (5Dx7), PVC FREE

### DeepinViewX PTZ Cameras with Guanlan



DS-2DF7C4xxIXG2/LM-EL(W){Y}  
xx = 25/42

Maximum VCA Range

**400 m**

- 6-252 mm lens, Rapid Focus 2.0, Quick Zoom
- 90% false alarm reduction \*
- Support Auto Tracking, multi-scene Perimeter Protection patrol and control, support zoom-in object details
- Recommended for PTZ linkage with radar, thermal, and other types of detectors



**TandemVu**

DS-2SF7C4xxMXG2/LM-EL(W){Y}/yy  
xx = 25/42 yy=14/26

Maximum VCA Range

**400 m**

- Fixed Lens Panoramic channel: VCA range up to 70 m for bullet lens, 30 m for 190° panoramic lenses, long depth perimeter
- 6-252 mm PTZ lens, Rapid Focus 2.0, Quick Zoom, suitable for long-distance perimeter up to 400 m
- 90% false alarm reduction \*
- Support Auto Tracking, big picture with zoom-in event details at the same time
- Approx. 2,500 square meters of perimeter protection and proactive monitoring by 1 unit

### AcuSeek NVRs

**AcuSeek**



DS-7608NXI-I2/VPro

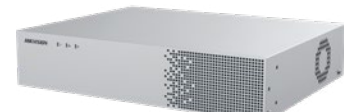
- Max. 8-ch IP camera inputs
- Up to 32-ch 1080p decoding capability
- Powered by Guanlan large-scale AI models
- Full channel AcuSeek with AcuSense IPC
- Support 4K HDMI output

### DeepinMind AI Boxes with Guanlan



iDS-6704NXI-S/T

- 4-ch 4 MP video stream perimeter protection with large-scale AI models
- Thermal camera perimeter false alarm reduction
- Pre-installed SSD for video and picture storage
- Operating at -30-65° C



iDS-6708NXI-S  
iDS-6716NXI-S

- 8/16-ch 4 MP video stream perimeter protection with large-scale AI models
- Thermal camera perimeter false alarm reduction
- Pre-installed HDD for video and picture storage

### Legacy project:

AI Boxes or NVRs with large-scale AI models, especially suitable when existing cameras are hard to replace

Notes: 90%\* reduction in false alarms: compared to conventional AI cameras under lab testing setting.

# Thermal imaging products

## HeatPro Cameras with Guanlan



HM-TD1228/G1/T3A  
Bi-Spectrum Turret  
Maximum VCA Range

**84 m**

- Resolution: 256×192
- Lens: 2/3/7/10 mm; FOV: 90°/50°/25°/18°
- Smart Hybrid Light (IR + white light)
- Alert: 30 m audible + strobe light
- 90% false alarm reduction compared with traditional thermal imaging cameras
- Temperature range: -20-150°C, ± 8°C
- Onvif Profile M



HM-TD2628/G1/T3A  
Bi-Spectrum Bullet  
Maximum VCA Range

**120 m**

- Resolution: 256×192
- Lens: 3/7/10 mm; FOV: 90°/50°/25°/18°
- Smart Hybrid Light (IR + white light)
- Alert: 30 m audible + strobe light
- 90% false alarm reduction compared with traditional thermal imaging cameras
- Temperature range: -20-150°C, ± 8°C
- Onvif Profile M

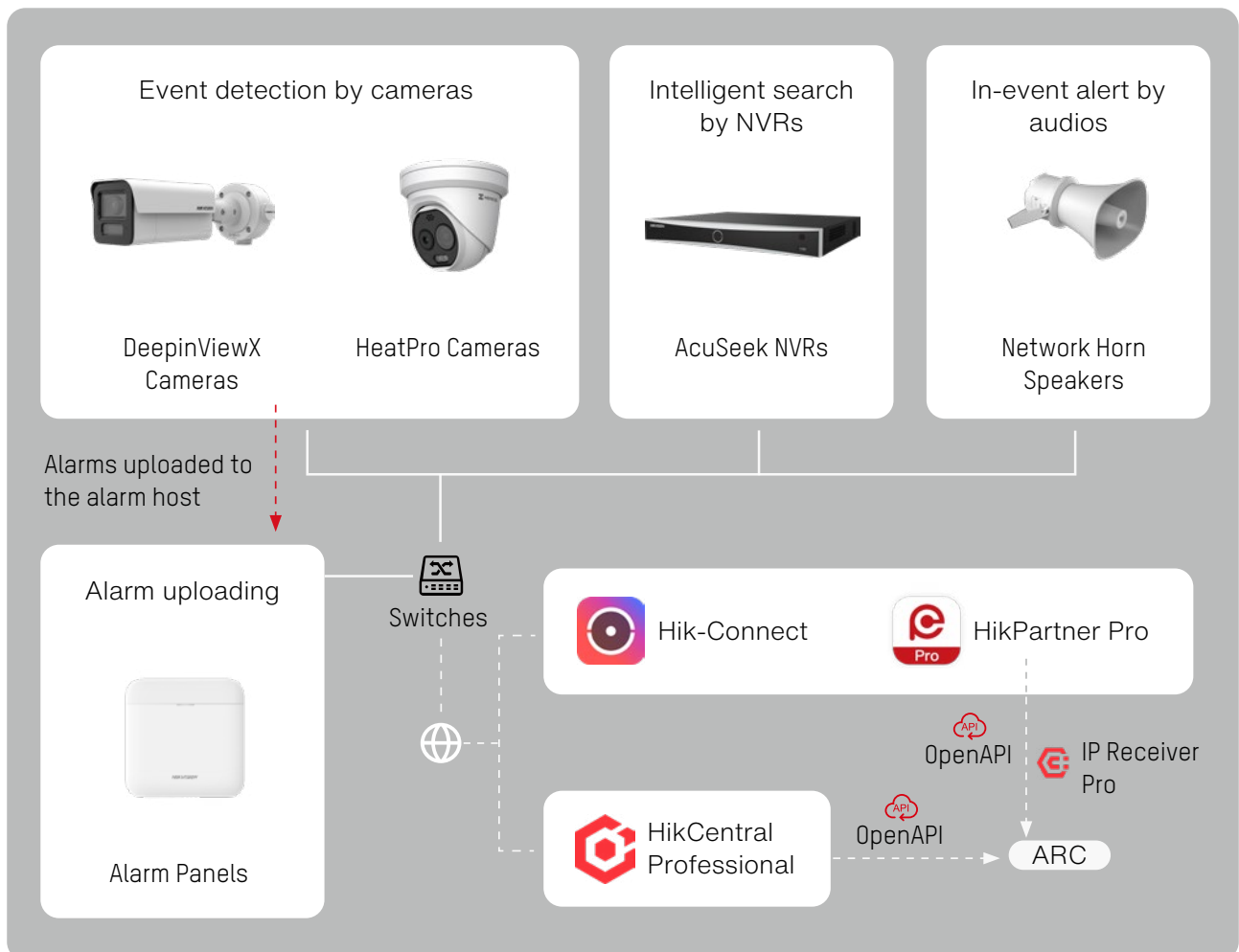
## AcuSeek NVRs



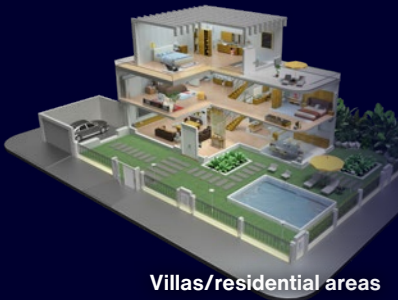
DS-7716NXI-I4/VPro

- 32-ch IP camera inputs
- 4 SATA interface, up to 20 TB for each HDD
- Power by Guanlan Large-Scale AI Model
- Full channel AcuSeek with Acusense IPC
- Supports 4K HDMI output

# Topology



# Application scenarios



Villas/residential areas



DeepinViewX Cameras



AcuSeek NVRs



Network Horn Speakers

- Large-scale AI models significantly reduce false alarms from animals & environment
- High target detection rates, low false negative rates
- All-in-one video detection and verification



Office parks



DeepinViewX  
Cameras



DeepinViewX  
PTZ Cameras

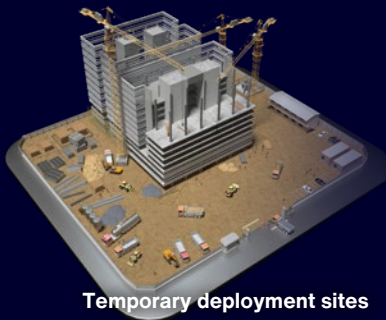


AcuSeek NVRs



Network Horn Speakers

- Large-scale AI models significantly reduce false alarms from animals & environment
- Long-range coverage per unit, high small-target detection rates, low miss rates
- PTZ for multi-scene patrols, target tracking, and detail zooming
- Linkage with network horn speakers to deter intruders instantly



Temporary deployment sites



DeepinViewX  
Cameras



DeepinViewX  
PTZ Cameras



AcuSeek NVRs



Network Horn Speakers

- Bullet cameras for short-range, PTZ for long-range—single tower covers 100 m+
- Linkage with network horn speakers for sound alarms
- Large-scale AI models ensure high detection accuracy, low false alarms, and reduced verification costs



Factories/warehouses



Thermal HeatPro Cameras

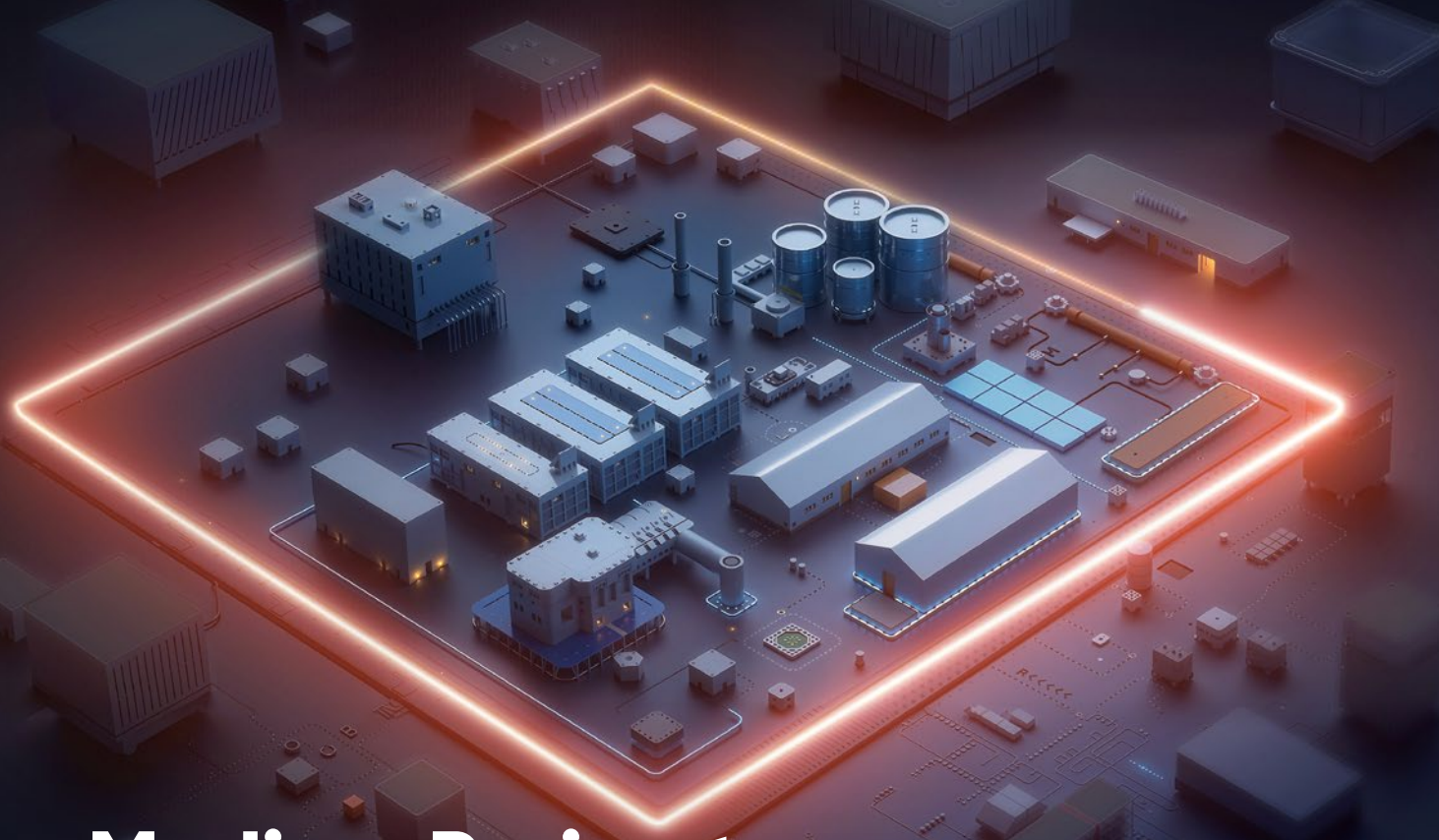


AcuSeek NVRs

- VCA3.0 and large-scale AI models significantly reduce false alarms from animals & environment
- Easy installation and maintenance, lower labor costs
- All-in-one design: Thermal imaging detection + visible light verification + built-in audio-visual alarm, cutting device quantity and costs
- Support HTTP and quick third-party integration. Support ADAM/Arteco/MOXA for alarm expansion

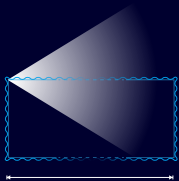
## Unified platform management

- Use HikPartner Pro + Hik-Connect for remote management or HikCentral Professional for local management
- Get real-time alerts, and check incident videos via portal & app, reducing verification costs
- Manage multiple sites with centralized control



# Medium Perimeter Solution

## What is medium perimeter?



100-500 m  
per side



Solar plants



Farms



Energy substations



Industrial parks





Logistic parks




Railway lines  
(Key area)

## Common challenges

 **Remote areas with poor light & harsh weather** make reliable monitoring and maintenance extremely difficult

 The large-scale infrastructure combined with the short-range coverage of individual devices results in **high wiring and installation costs**

 **Frequent false alarms triggered by animals** increase review workload and cause delays in responding to real incidents

# What we offer

For medium-range perimeter scenarios, Hikvision offers **thermal imaging, radar PTZ**, and **fiber-optic vibration sensing system** solutions. These systems are highly adaptable to environmental conditions, can cover long distances or large areas with a single unit, and are more streamlined to deploy.

## Thermal imaging solution

The thermal imaging solution enables long-distance coverage with a single device, suitable for protecting extensive critical infrastructure. By integrating Guanlan large-scale AI models and video verification, it delivers accurate alarms, and can achieve a high target detection rate in complex environments.

 **Long coverage up to 450 m with one camera**

- Reduce pole installation and wiring costs



**Highly accurate alarms**

- Accurate alarms powered by large-scale AI models
- Video for double check



**All-weather, all-scenario, high detection rates**

- Regardless of day or night and various weather like rain, snow, and fog.

## Radar PTZ solution

The radar PTZ solution integrates radar and video tech. Linked with PTZ cameras powered by large-scale AI models, it can effectively track targets and verify detailed information.



**Long range, wide coverage**

- One radar PTZ covers up to 500-meter perimeter side



**Radar-video fusion, ultra-precise detection**

- Radar: Detection with precise positioning
- Video: Target classification, tracking, and verification



**All-weather, accurate detection**

- Strong resistance to environmental interference and harsh conditions:
  - Low light
  - Dust & fog & rain & snow
  - High temperatures



**Easy installation**

- All-in-one design for easy installation
- Remote radar adjustment (horizontal/vertical) for easy debugging
- 500 m/unit coverage, cut infrastructure costs (poles, cabling, installation)

# Key products

## Thermal imaging products



HM-TD2638/G1/T3Y  
Maximum VCA Range

**450 m**

- Thermal resolution: 384 × 288
- Optical resolution: 2688 × 1520, 4 MP
- Thermal lens: 10/15/25/35 mm
- 4 VCA rule types (line crossing, intrusion, region entry & exit)
- Protection: IP67



HM-TX3840/G0/T1  
Maximum VCA Range

**250 m**

- Thermal resolution: 384 × 288
- Thermal lens: 10/15/25 mm
- Optical resolution: 2688 × 1520, 4 MP
- PTZ: 4 MP, 40x optical zoom
- 4 VCA rule types (line crossing, intrusion, region entry & exit)
- Protection: IP67

## DeepinViewX Radar PTZ Cameras with Guanlan

DeepinView X  
Dark Fighter 2.0



DS-2SR8C432I5XG2-LFW/SP/R12/28(C5F2)

Detection Range

**200 m**

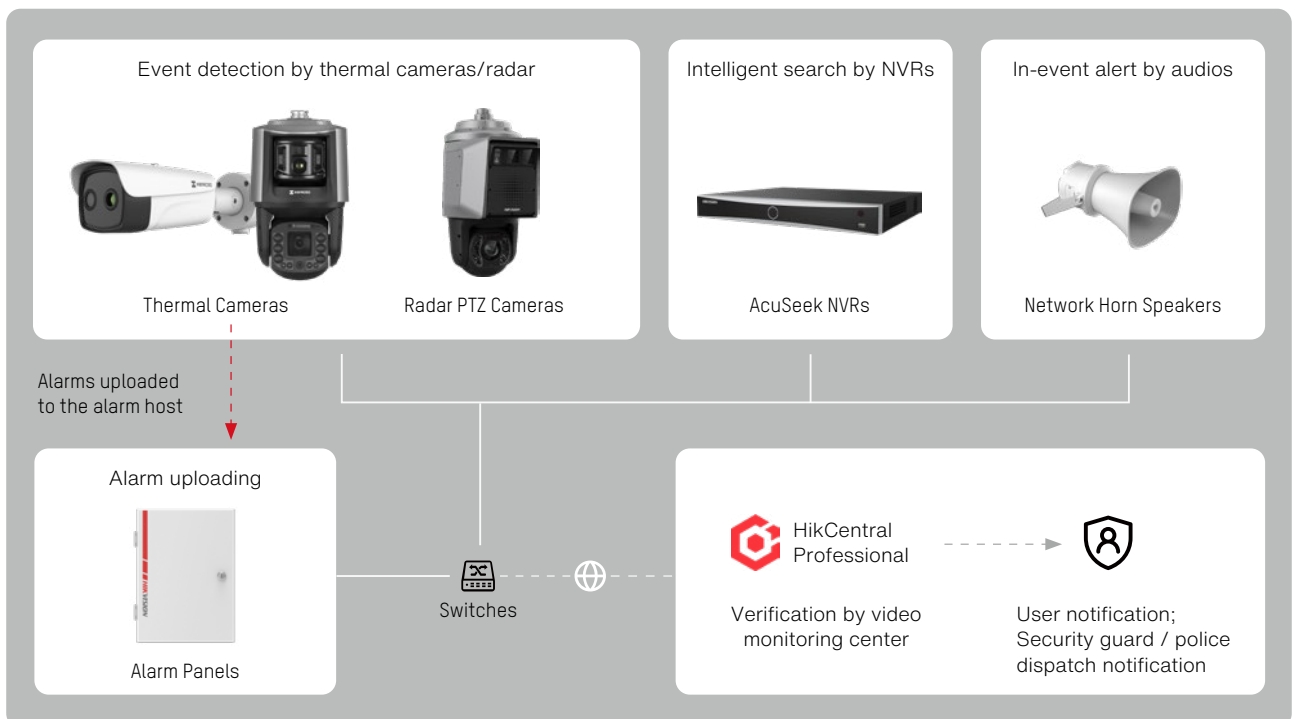
DS-2SR8C440I5XG2-LFW/SP/R15/28(C5F2)

Detection Range

**500 m**

- Radar frequency: 24.05 GHz to 24.25 GHz
- Double radar beams: Narrow beam: 15° (0 m to 500 m); Wide beam: 50° (0 m to 100 m)
- Optical resolution: 2560 × 1440
- Focal length: 6 mm to 240
- Zoom in for object details
- Support Auto Tracking
- Laser light range: 500 m

# Topology



# Fiber-optic vibration sensing system solution

Utilizing HIK-DAS acoustic recognition AI algorithm and video linkage verification, the solution minimizes false alarms for precise positioning, with robust environmental adaptability.

## Easy deployment

- No layout limitation
- Easy fiber installation, no need for poles, power, or network
- 1 host detects entire site; simple tuning ensures accurate detection

## Strong environment adaptability, safe 24/7 monitoring

- Fireproof, explosion-proof, electrically insulated, immune to electromagnetic interference

## High accuracy

- ±5 m positioning accuracy over tens of kilometers
- Dual-level false alarm reduction: HIK-DAS (Distributed Acoustic Sensing) algorithms + DeepinMind NVR analysis for over 99% accuracy

## Key products

### Fiber-Optic Vibration Sensing Processors



DS-QFV0102W (1 km, dual-ch)  
DS-QFV0202W (2 km, dual-ch)

- Dual-channel detection, up to 2 km per channel
- Meter-level localization of ±5 m accuracy
- High accuracy with deep learning algorithm
- 24/7 safe and adaptive monitoring
- CCTV interaction
- IP54 waterproof

### PTZ Cameras



DS-2DF8C442IXG1-ELWY

- 4 MP@50/60 fps, 1/1.8" sensor, 42x optical zoom
- 400 m IR, SharpMotion, 150 dB WDR, GIS
- Pan: 360°, tilt: -20° to 90°, smart pan-tilt correction
- Smart events, detail capture, ANPR, multi-target-type detection, Auto Tracking 3.0
- IP67, IK10, auto wiper, NEMA 4x anti-corrosion

### DeepinMind NVRs

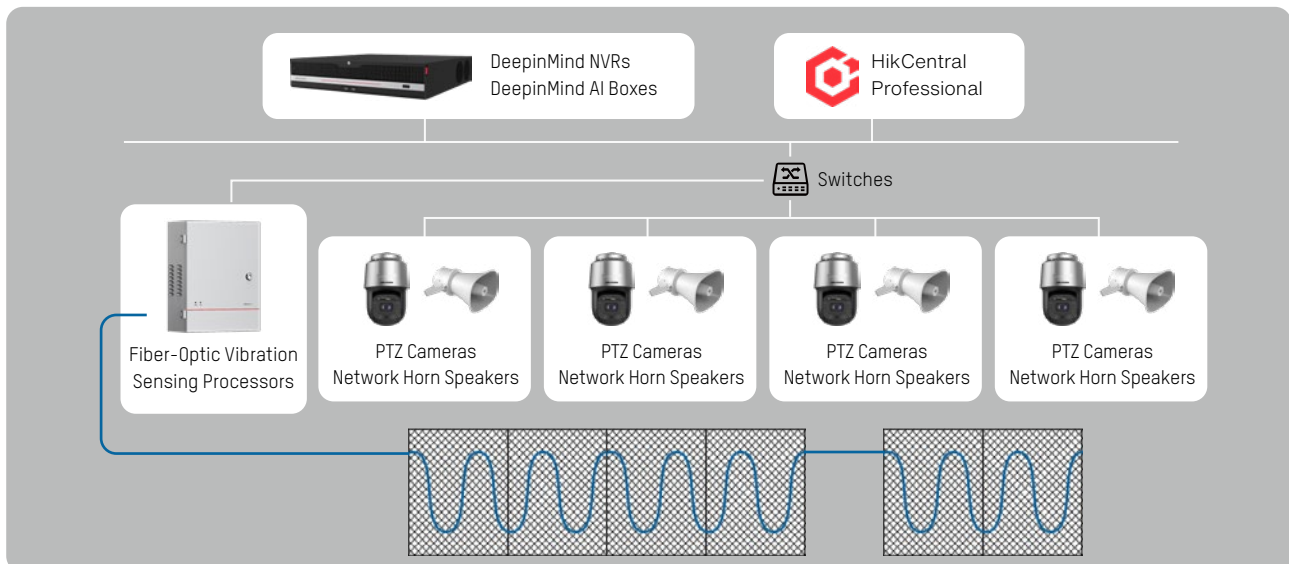


iDS-9632NXI-M8/X

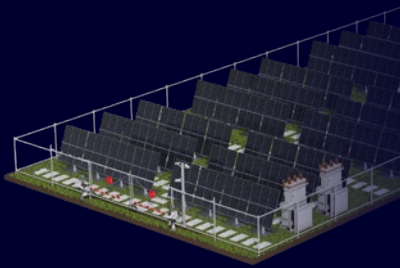
- Max. 32-ch perimeter protection with large-scale AI models via AcuSense IP cameras
- Incoming/outgoing bandwidth: 320 Mbps / 400 Mbps
- Up to 2 × 32 MP or 32 × 1080p decoding capacity

\*Require a dedicated version

## Topology



# Application scenarios



**Solar plants**



**Thermal Security Bullet Cameras**



**Network Horn Speakers**



**AcuSeek NVRs**

- Bi-spectrum VCA (visible + thermal) ensures high target detection rates in all weather & scenarios
- VCA3.0 and large-scale AI models significantly reduce false alarms
- Single device detects intrusion up to 450 m, cut system installation costs



**Industry parks**



**Radar PTZs**

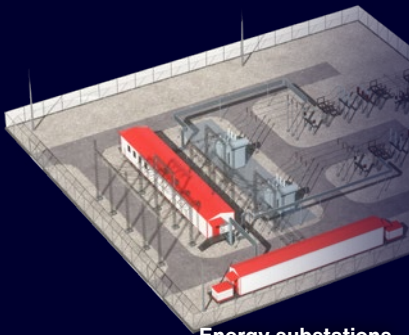


**Network Horn Speakers**



**AcuSeek NVRs**

- Radar-video fusion, precise detection, PTZ target tracking
- 500 m coverage per unit reduces installation and wiring costs
- Strong environmental adaptability, unaffected by harsh weather



**Energy substations**



**Fiber-Optic Sensing Processors**



**Optical Fibers**



**DF Series PTZs**



**Network Horn Speakers**



**DeepinMind M Series NVRs**

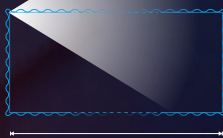
- Easy installation: Full fiber coverage, no power/network needed
- Dual-level false alarm reduction: HIK-DAS algorithms + DeepinMind NVR analysis
- ±5 m positioning accuracy
- PTZ video verification enhances accuracy

## Unified platform management

- HikCentral Professional software manages multiple devices (cameras, NVRs, speakers, alarms, access control, radar, fiber-optic sensing systems, etc.) seamlessly.
- Get real-time alerts, live view anytime with local or remote access

# Large Perimeter Solution

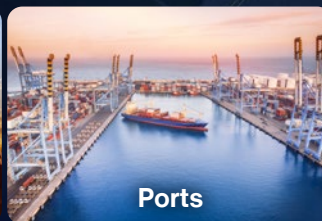
## What is large perimeter?



500 m+  
single side



Oil fields



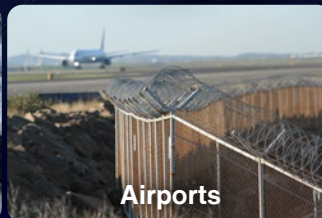
Ports



Solar farms



Mining



Airports



Nature reserves

## Common challenges



Difficult **pole installation**, high **power/network costs**



Incomplete coverage by single camera - **distant targets unclear**



Hard to **locate intrusion targets** accurately



**Complex environments**, such as fog, backlight, high-temp and dust, hinder detection



**No power or network** in restricted areas raises security costs

## What we offer

For long-distance perimeter scenarios, Hikvision offers **radar + thermal positioning system**, and **fiber-optic vibration sensing system** solutions. These enable accurate detection and target positioning, extending beyond visibility limits even in the most challenging environments.

## Radar + thermal positioning system solution

The radar + thermal positioning system solution is designed for intrusion detection in large, open areas. It withstands harsh conditions, performs long-range scanning, locates multiple targets, and uses thermal imaging for tracking and verification. This system provides all-weather visual detection and early warning.

### 5km Beyond-visual-range detection

- Kilometer-scale target identification (up to 5 km person detection)
- Active electromagnetic waves surpass human and optical limits

### Wide-area scanning

- Single-device horizontal detection up to 100°, zero dead zones

### Multi-target positioning

- Detect and locate up to 500 targets simultaneously with precision

### 24 Radar-thermal linkage

- 24/7 all-weather, long-range target tracking

## Key products

### Security Radar + Thermal PTZ Cameras

#### 3 km – 5 km or more



- STS-BG32X-L3  
STS-BG32X-L5 STS-BG32X-L12
- Frequency: X-band
  - Detection angle: Horizontal 100°, Vertical 12°
  - Detection distance: Up to 5 km (persons), up to 10 km (vehicles), 12 km+ (ships)
  - Angle accuracy: 0.3°
  - Up to 500 targets detection
  - Link with 4 PTZ cameras for tracking



- HM-TD95C8-300ZK4FL/W(B)
- Thermal resolution: 1280 × 1024
  - Thermal lens: 30-300 mm
  - Optical resolution: 2688 × 1520, 4 MP
  - Optical lens: 10-1000 mm, 100x

#### 2 km



- DS-TDSB0G-FC/2km
- Frequency: K-band/C-band
  - Detection angle: Horizontal 90°, Vertical 15°
  - Detection distance: Up to 1.8 km (persons), up to 3 km (vehicles), 5 km+ (ships)
  - Angle accuracy: 0.3°
  - Up to 32 targets detection
  - Link with 4 PTZ cameras for tracking



- HM-TD8168-150ZE4F/G0/T2
- Thermal resolution: 640×512
  - Thermal lens: 19-150 mm
  - Optical resolution: 2688 × 1520, 4 MP
  - Optical lens :10-900 mm, 90x

#### 1 km

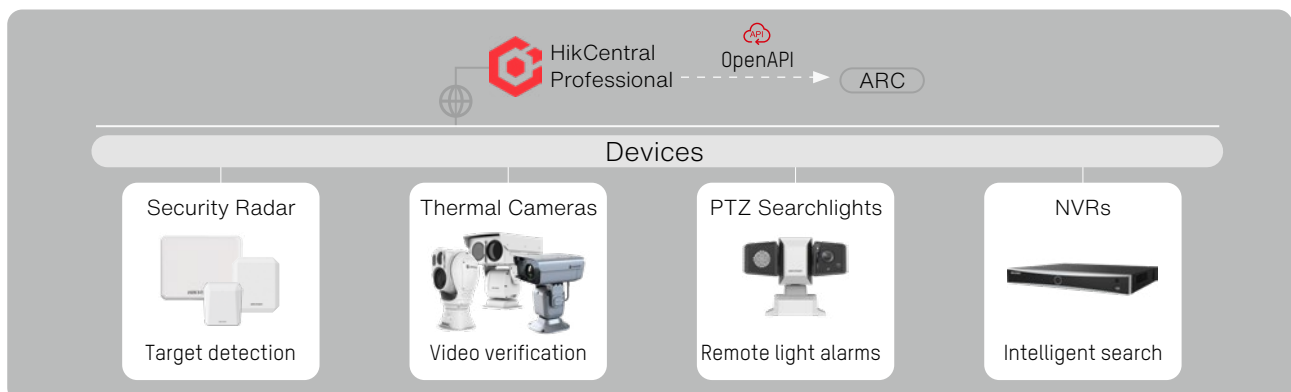


- DS-TDSB0G-FK/1km
- Frequency: K-band
  - Detection angle: Horizontal 90°, Vertical 15°
  - Detection distance: Up to 1 km (persons), up to 2 km (vehicles), 2 km+ (ships)
  - Angle accuracy: 0.3°
  - Up to 32 targets detection
  - Link with 4 PTZ cameras for tracking



- HM-TD6368-100C4L/G0/T2Y
- Thermal resolution: 640×512
  - Thermal lens: 100 mm
  - Optical resolution: 2688 × 1520, 4 MP
  - Optical lens: 6.0-360 mm, 60x

## Topology



# Fiber-optic vibration sensing system solution

This solution is ideal for cross-line detection in linear/pipeline or high-security perimeters. It is resistant to combustion and explosion, requiring no power or network for long-range use, and can integrate with video/thermal imaging for precise verification.

**100 km** Ultra-long perimeter prevention: **Up to 100 km per device**  
 - No layout limitation

**24** Strong **environment adaptability**, safe **24/7 monitoring**  
 - Fireproof, explosion-proof, electrically insulated, immune to electromagnetic interference

**Suitable for no power/network scenes**  
 - Passive fiber-optical cables, easy installation

**High accuracy**  
 - ±5 m positioning accuracy over tens of kilometers  
 - Dual-level false alarm reduction: HIK-DAS (Distributed Acoustic Sensing) algorithms + DeepinMind NVR analysis for over 99% accuracy

## Key products

### Fiber-Optic Vibration Sensing Processors



- |   |   |
|---|---|
| <p><b>DS-QFV0502 (5 km, dual-ch)</b></p> <ul style="list-style-type: none"> <li>· Dual-channel detection, up to 2/5 km per channel</li> <li>· Meter-level localization of ±5 m accuracy</li> <li>· High accuracy with deep learning algorithm</li> <li>· 24/7 safe and adaptive monitoring</li> <li>· CCTV Interaction</li> </ul> | <p><b>DS-QFV1002 (10 km, dual-ch)</b><br/><b>DS-QFV5002 (50 km, dual-ch)</b></p> <ul style="list-style-type: none"> <li>· Dual-channel detection, up to 10/50 km per channel</li> <li>· Meter-level localization of ±5 m accuracy</li> <li>· High accuracy with deep learning algorithm</li> <li>· 24/7 safe and adaptive monitoring</li> <li>· CCTV Interaction</li> </ul> |
|---|---|

### PTZ Cameras



- DS-2DF8C442IXG1-ELWY**
- 4 MP@50/60 fps, 1/1.8" sensor, 42x optical zoom
  - 400 m IR, SharpMotion, 150 dB WDR, GIS
  - Pan: 360°, tilt: -20° to 90°, smart pan-tilt correction
  - Smart events, detail capture, ANPR, multi-target-type detection, Auto Tracking 3.0
  - IP67, IK10, auto wiper, NEMA 4x anti-corrosion

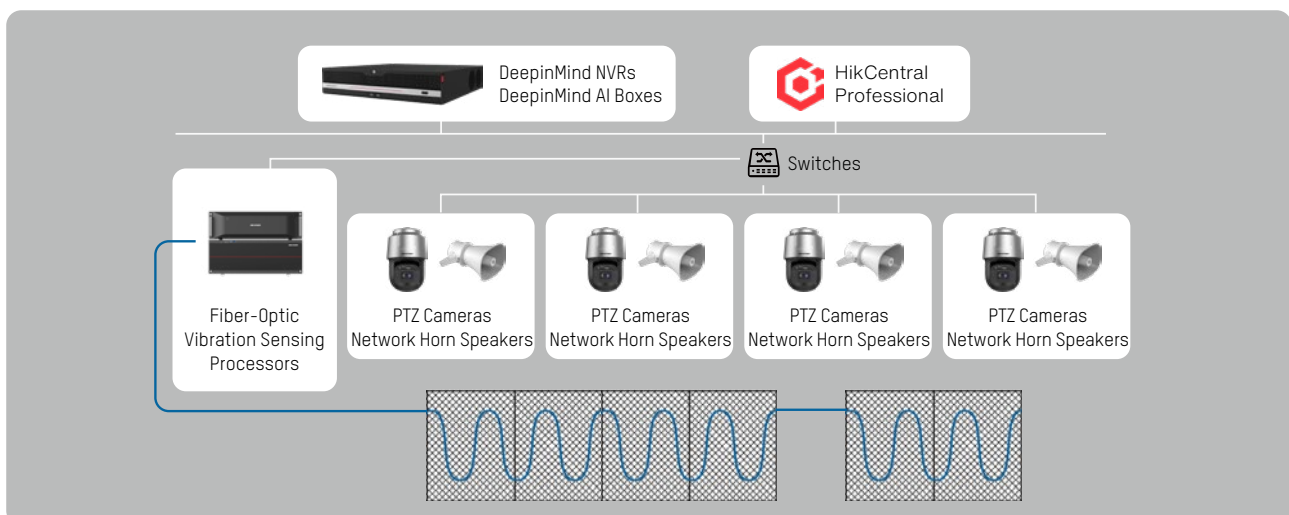
### DeepinMind NVRs



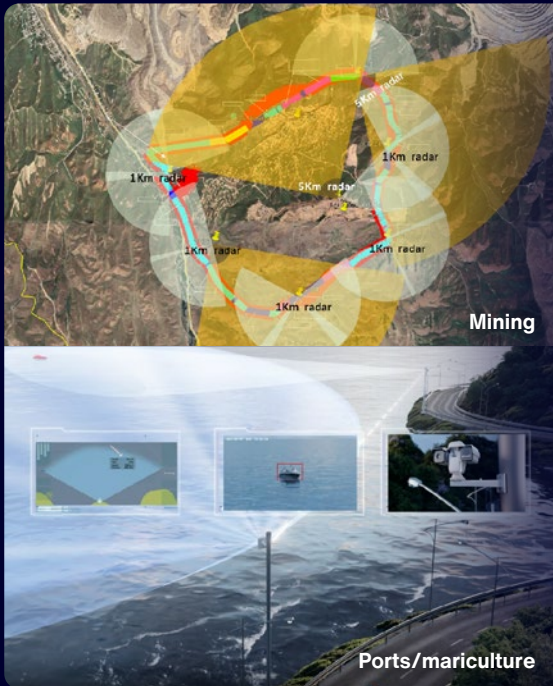
- iDS-9632NXI-M8/X**
- Max. 32-ch perimeter protection with large-scale AI models via AcuSense IP cameras
  - Incoming/outgoing bandwidth: 320 Mbps / 400 Mbps
  - Up to 2 × 32 MP or 32 × 1080p decoding capacity

\*Require a dedicated version

## Topology



# Application scenarios



Mining

Ports/mariculture



Radar



Thermal Positioning Systems



PTZ Searchlights



NVRs

- Single-device wide-angle intrusion detection (90°, >500 m) reduces project costs
- Radar detection with thermal positioning system tracking ensures high accuracy
- Integrated PTZ searchlights provide long-range visual alerts
- Strong environmental adaptability, unaffected by harsh weather



Solar farms

Airports



Fiber-Optic Sensing Processors



Optical Fibers



DF Series PTZs



Network Horn Speakers



DeepinMind M Series NVRs

- Easy installation: Full fiber coverage, no power/network needed
- Dual-level false alarm reduction: HIK-DAS algorithms + DeepinMind NVR analysis
- ±5 m positioning accuracy
- PTZ video verification enhances accuracy

## Unified platform management

- HikCentral Professional software manages multiple devices (cameras, NVRs, speakers, alarms, access control, radar, fiber-optic sensing systems, etc.) seamlessly.
- Get real-time alerts, live view anytime with local or remote access

# How to Choose the Right Perimeter Solution?

	Video Solution	Thermal Imaging Solution	Radar Solution	Fiber-Optic Vibration Sensing System Solution
<b>Core value</b>	<ul style="list-style-type: none"> <li>▪ Easy setup</li> <li>▪ Visualization</li> </ul>	<ul style="list-style-type: none"> <li>▪ Easy setup</li> <li>▪ High environmental adaptability</li> </ul>	<ul style="list-style-type: none"> <li>▪ Long range, full coverage, wide angle</li> <li>▪ Detect both perimeter and internal scenes</li> </ul>	<ul style="list-style-type: none"> <li>▪ Detect up to 100 km per server</li> <li>▪ Work off-grid, resistant to electromagnetic interference</li> <li>▪ Flexible installation, including underground</li> </ul>
<b>Range/area</b>	Short/medium range, wide coverage	Short/medium/long range, up to 10 km per camera, wide coverage for short range, narrow coverage for long range	Medium/long range, up to 10 km full-range coverage per device, up to 120° wide coverage	Medium/long/ ultra-long range, recommended for scenarios ≥500 m, up to 100 km per server, narrow coverage due to touch alarm
<b>Environmental adaptability</b>	Subject to weather interference	Resistant to weather and electromagnetic interference	Resistant to weather Suitable for open area	Resistant to weather and electromagnetic interference
<b>Detection type</b>	<b>Intrusion detection</b> Line crossing	<b>Intrusion detection</b> Line crossing	<b>Intrusion detection</b> Line crossing	<b>Line crossing</b>
<b>Object information</b>	Detection, identification, comparison	Detection and identification (persons, vehicles, and ships)	Detection, tracking, speed, distance, direction, identification with video (persons, vehicles, and ships)	Detection and positioning, identification with video
<b>Recommended application</b>	General perimeter, such as villas, residential areas, office parks, parking lots, etc.	Ideal for high-security sites: high-end residential buildings, large parks, solar plants, and key industrial facilities.	High-security sites: Large parks, solar plants, harbor, mariculture, mines and other large open areas	<ul style="list-style-type: none"> <li>• Restricted zones</li> <li>• Critical infrastructure, like solar parks</li> <li>• Off-grid area without power or internet access (can be used alone).</li> </ul>

\* For radar and fiber-optic vibration sensing system solutions, we recommend integrating PTZ cameras, thermal PTZ cameras to achieve comprehensive, multi-dimensional sensing capabilities.

# Shield Every Edge

Intelligent Perimeter Protection Solution



[www.hikvision.com](http://www.hikvision.com)  
[support@hikvision.com](mailto:support@hikvision.com)



**HIKVISION**<sup>®</sup>